

Mimosa NearPoint for Microsoft Exchange Server



Next-Generation Email Archiving

All organizations deal with the challenge of managing growing volumes of email. According to Ferris Research, the typical information worker sends and receives more than 600 emails in a given week. And, many of these emails are either business records or contain valuable corporate knowledge and need to be retained accordingly. Keeping a large volume of email leads to higher storage costs and headaches for IT staff in the form of longer back-up windows. In fact, Osterman Research points out that, in general, message stores have grown 30 percent from winter 2007 to winter 2008. As message stores grow, organizations face challenges with:

- Managing storage costs—getting content off expensive production systems
- Speeding recovery times—reducing recovery point objectives and ever-expanding backup windows
- Ending eDiscovery fire-fights—lowering cost of reactive collection and review
- Mitigating content-related risks—ensuring proper usage of content within the organization

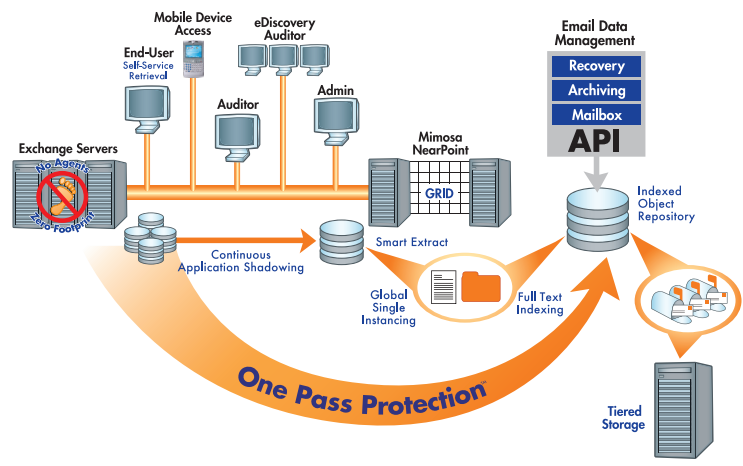
Exchange log files are captured the instant they are committed to disk and stored “off-host” on NearPoint. Continuous Application Shadowing is an application-intelligent process which blocks corruption from the backup copy. All email content extracted from the log files is indexed and stored with single-instance storage. Continuous Application Shadowing captures the complete Exchange mailbox information, as well as email stored offline in PST files and all email content found in public folders—a major advantage for eDiscovery and Exchange recovery.

A Next-Generation Approach to Email Archiving

Existing archiving solutions place heavy burdens on Exchange servers, relying on data capture methods like MAPI crawls and journaling—both of which can increase input/output per second (IOPS) on the Exchange server by up to 50 percent.

In 2005, Mimosa NearPoint for Microsoft Exchange incorporated an innovative data capture approach called Continuous Application Shadowing™ where

Continuous Application Shadowing leverages Volume Shadow-copy Service (VSS) capture, improving log shipping performance by a 10x factor over Extensible Storage Engine (ESE) when applying Exchange logs. Additionally, with an Exchange 2007 Cluster Continuous Replication environment NearPoint can read from the passive node eliminating any load on the active node.



CUSTOMER SPOTLIGHT

“I was captivated by Mimosa NearPoint the first time I saw it. It is so simple to use and it fits perfectly in our initiative to empower our users with more self-service capability to manage email. The optimization of our email environment with Mimosa NearPoint helps Virtua Health enhance the quality of patient care, improve clinical safety, meet regulatory requirements, reduce costs, and enhance employee productivity.”

— **Tom Pacek,**
Virtua Health



NearPoint also supports capture of small sets of mailboxes that are either local to the NearPoint server or geographically dispersed. In scenarios where the Exchange servers are geographically dispersed, customers can leverage NearPoint's MAPI archiving, which provides the ability to specify include or exclude criteria for certain message classes or folders from those mailboxes. MAPI archiving and Continuous Application Shadowing can coexist in a complementary manner, (e.g., where an organization has a mix of centralized and remote Exchange servers).

Flexible, Granular Retention Management

Customers can lengthen and shorten retention policies as needed, apply retention policies at various levels such as folder or message class, apply item-level legal hold across all content in the archive, and use fine-grain retention and exclusion policies to manage capacity of the archive more efficiently. Flexible retention means you can start archiving today while you formalize your retention policies, knowing you can modify in-place without re-archiving.

Integrated Recovery and Disaster Recovery

Because NearPoint leverages Continuous Application Shadowing to capture Exchange data, organizations can easily get data back to a failed production Exchange server quickly—just point-and-click to use the NearPoint shadow copy to repopulate the production Exchange server with recovery possible at the database, mailbox, or message level.

Powerful, Intuitive eDiscovery

NearPoint's eDiscovery Option provides the functionality necessary to drastically reduce the cost of collection, processing, and review, offering users powerful search capabilities ranging from simple keyword search to advanced search operators (e.g., proximity search, wildcard, and search within a search). Organizations can federate searches across multiple NearPoint servers to truly have one interface and one query function to complete a full discovery collection.

Easy End-User Access to Archived Email and Files

With Mimosa NearPoint, end users no longer have to deal with quota notifications which force deletion or PST creation. Instead, they get "unlimited" inboxes with direct access to the Mimosa archive in Outlook or OWA with their folder hierarchy and organizational structure maintained. Users can also search for archived content from network file shares directly alongside email in the Outlook interface.

Mimosa Archive Cache

Mimosa NearPoint does not require users to be connected to a network to access their archived content—it maintains an archive cache of content on the user's desktop. NearPoint also allows users to search and find active and archived content in both Outlook and Windows Desktop Search (WDS).

Open, Extensible Archiving Platform

Mimosa Systems offers a software development kit (SDK) containing a set of comprehensive APIs and sample applications which allow customers and partners to use and/or augment the NearPoint platform.

MIMOSA NEARPOINT SYSTEM REQUIREMENTS

NearPoint Platform Support

- Microsoft Windows Server 2008 Standard and Enterprise Editions
- Microsoft Windows Server 2003 SP1, SP2—32 and 64-bit Standard and Enterprise Editions
- Microsoft Windows Server 2003 R2 SP1, SP2—32 and 64-bit Standard and Enterprise Editions

Database Support

- SQL Server 2008 SP1 Standard and Enterprise Editions
- SQL Server 2005 SP2 Standard and Enterprise Editions

Language Support

- English (US and UK), German, French, Traditional and Simplified Chinese, Japanese

Exchange Server

- Exchange 2000 (supports clusters)
- Exchange 2003 (supports clusters)
- Exchange 2007 SP1 running on Microsoft Windows Server 2003 32 and 64 bit & Windows Server 2008 (supports CCR)

WORM Storage Devices

- EMC Centera with CenteraStar 3.0.3, 3.1.3 and 4.0
- Hitachi HCAP 2.4.197

Storage Replication

- Dell EqualLogic (Storage based)
- NetApp SnapMirror (Storage based)
- Double-Take for Windows (host based)

Office Communication Server

- OCS 2007 Standard and Enterprise Editions

Live Communication Server

- LCS 2005 SP1

Clients

- Windows 2000, XP, Vista
- Outlook 2000, 2002, 2003, 2007
- Outlook Web Access (OWA)
- Entourage, Eudora
- Windows Mobile 5.1
- RIM Blackberry 4.5
- Internet Explorer, Safari, Firefox, Opera, Chrome
- Apple iPhone v2.2 and higher

ABOUT MIMOSA SYSTEMS

Mimosa Systems, Inc. delivers next-generation content archiving solutions for information immediacy, discovery, and continuity. Mimosa NearPoint is the industry's most comprehensive unstructured information management software solution for email, files, and instant messages, enabling archiving, eDiscovery, storage management, and recovery in a unified solution.

MIMOSA SYSTEMS HEADQUARTERS

3200 Coronado Drive
 Santa Clara, CA 95054

T +1 (408) 970 9070

F +1 (408) 970 9041

Email: info@mimosasystems.com

WORLDWIDE OFFICES

Australia +61 (2) 9089 8603

Canada +1 (613) 797 2952

China +86 (21) 6103 7361

France +33 1 55 60 23 62

Germany +49 (0)89 18918 1300

India +91 (20) 4048596

United Kingdom +44 (0) 118 963 7860

www.mimosasystems.com

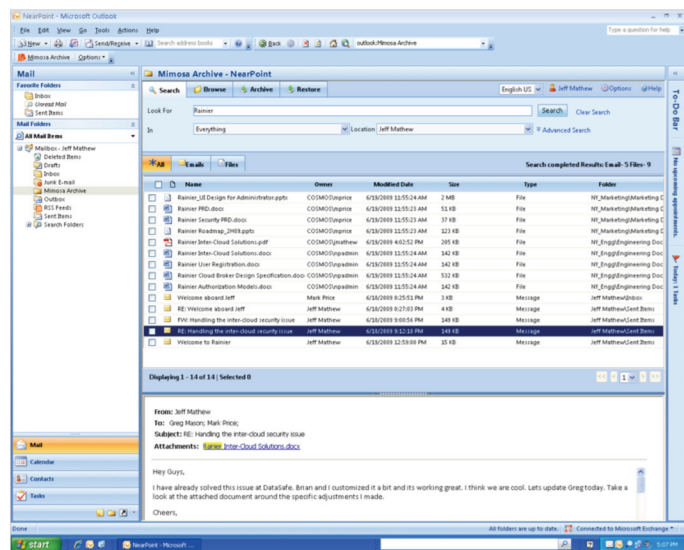


Figure 1. Seamless Outlook Access of Archived Email and File System Content